

**Proudly
Australian**



Merlin Reverse Osmosis System

The new Merlin Reverse Osmosis System features continuous-flow water production, so a storage tank is no longer required. The unit operates on line pressure, which eliminates the need for an electrical pump in most applications. The patented high-production, low-energy membrane reduces impurities in up to 2,816 litres (744 gallons) of water per day.

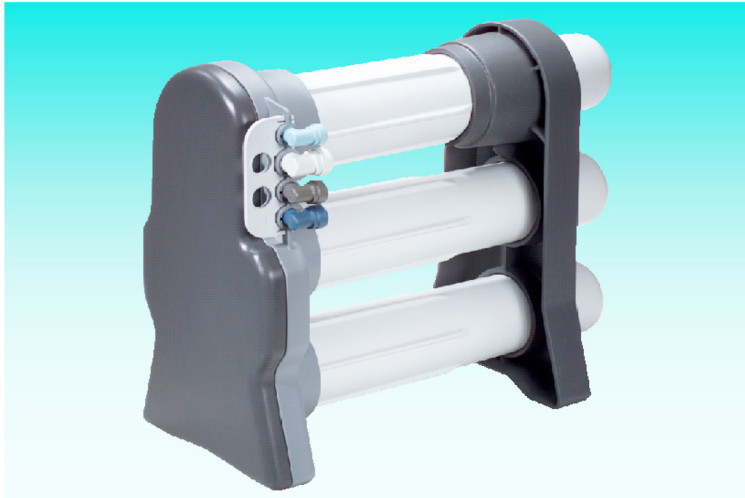
The system has been tested according to NSF/ANSI 58 for the reduction of substances listed. The concentration of the indicated substances in water entering the system was reduced to a concentration less than or equal to the permissible limit for water leaving the system, as specified in NSF/ANSI 58. The substances are: Arsenic, Barium, Cadmium, Chromium (Hexavalent), Chromium (Trivalent), Copper, Fluoride, Lead, Nitrate, Nitrite, Radium 226/228, Selenium and TDS.

Features and Benefits

- Reduced Chlorine Taste and Odour, Certain V.O.C.s, Pesticides & Minerals
- Compact Design - fits easily Undersink
- Continuous Flow - No Storage Tank
- High Recovery - less water wastage
- Uses line pressure only (> 276 kPa/40psi)
- Multiple outlet locations off one system

Typical Applications

- Domestic
- Tea, Coffee and other Beverages
- Business Offices and Restaurants
- Ice Makers
- Aquariums
- Steamers
- Photography Processing



General Specifications

- Connection: Inlet: ½" Tube Polypropylene
Drain: ¾" Tube Polypropylene
Permeate: ¾" Tube Polypropylene
- Dimensions: Height: 433mm (17")
Width: 517mm (20¼")
Depth: 246mm (9¾")
- Temperature Ranges: 4.4°C - 38°C
(40°F - 100°F)
- Operating Pressure: 276 kPa (40 psi) (Min.)
552 kPa (80 psi) (Max.)
- Permeate (Treated Water) Capacity: 1.89 LPM @ 25% Recovery with up to 90% rejection
Based on 750mg/L TDS, 25°C (77°F) at 344 kPa (50psi)
(Capacity will vary depending on raw water quality and temperature.)

Raw Water Feed should not exceed:

TDS: > 50 - < 2000mg/L **Hardness:** < 170mg/L

Iron: < 0.1mg/L **Manganese:** < 0.05mg/L

Hydrogen Sulfide: Nil **pH:** 3 - 11

Water Temperature: 4°C - 38°C (40°F - 100°F)

Filter/Membrane Performance Specifications

Filter Type	Dimensions	Flow Rate	Average Life
Carbon Prefilter	L. 432mm	3.75 GPM	6 Mths (5000Gal)
	D. 74mm	14 LPM	
RO Membrane	L. 476mm	.95 LPM	2 - 4 years
	D. 80mm		
Carbon Postfilter	L. 267mm	.75 GPM	6 Months
	D. 66mm	2.8 LPM	

For additional technical information contact your local dealer.

Warning:

For drinking water applications, do not use water that is microbiologically unsafe or of unknown quality without adequate disinfection.

COOLABAH WATER

Ah... that's better !

Model No.

MROSFLF

Reverse Osmosis

Merlin R.O. System

Phone
1800 069 800
0269 258 555