



Envirobore



Non-toxic, Non-corrosive
Pipework & Bore cleaner

PRODUCT INFORMATION

Proudly
Australian



COOLABAH WATER

111 Biroomba Lane - PO Box 1160
Wagga Wagga NSW 2650

PH. 02 6925 8555
FX. 02 6925 8588

Bore Cleaner for Iron Bacteria

- > Easy to use liquid form.**
- > Non-hazardous & non-toxic.**
- > Easy storage - No bunding/drip protection required.**
- > Non-corrosive, No strong acids (including oxalic acid).**
- > Very effective – fast results – removes odours.**
- > Organic listed (OMRI).**
- > Improves water quality – Enhances system function.**
- > Environmentally responsible.**

Envirobore

Your pipework and bore cleaner for effective and safe removal of iron bacteria.

Product Application Sheet – TRIPLE 7 ENVIROBORE



Q. ***What is Envirobore?***

A. Envirobore is an organic pipework and bore cleaner.

Q. ***How much do I use?***

A. This depends on the size of the bore. Average usage is around 20 litres. To continually dose the water, you will use between 15 – 20 ml of product per 1000 litres of bore water pumped out.

Q. ***How does it work?***

A. It removes iron bacteria accumulation in pump and pipework systems.

Q. ***Will it do anything for iron stain?***

A. Yes, it may help iron staining.

Q. ***Will it control further build-up in pipes and pumps?***

A. Yes, dosed into a system, it will control organic accumulation.

Q. ***Will it stop slime in troughs and tanks?***

A. Yes, it will inhibit algae or slime in tanks or troughs if the system is being dosed.

Q. ***Will it help my plant growth during irrigation?***

A. Yes, it is an excellent wetting agent.

Q. ***Will it save irrigation water usage?***

A. Yes, it can increase water penetration during irrigation.

Q. ***Is it safe?***

A. Yes, it is a non-toxic, non-hazardous, non-corrosive and readily bio-degradable liquid.

Q. ***Is it easy to use?***

A. Yes, it is an easy to use liquid with no mixing required.

Q. ***Is it guaranteed?***

A. Yes, it is money back performance guaranteed.

Q. ***Where is made?***

A. In Australia.

Product Application Sheet – TRIPLE 7 ENVIROBORE

Description

TRIPLE 7 Envirobore is a high performance surfactant chemistry used to remove iron bacteria from water bores, pipes, pumps and filters. The product can also control scum, slime and algae growth. TRIPLE 7 Envirobore is suitable for use in organic production.

Removal of iron bacteria from bores and pumps

Pour down the amount recommended on the Envirobore label. Dose amount will depend on the bore size and extent of bacterial growth. Circulate the water by running the pump for 4 – 6 hours, with the outlet pipe redirected back down the bore. Leave the bore idle for a minimum of 4 hours, preferably overnight.

After treatment, the discharge from the bore may be frothy or discoloured, depending on water constituents and bore condition. Dispose of the contaminated water. The water will soon run clear and be usable. Redirect to normal use. (Please refer to diagram I).

Dosing rate

The following chart is a recommendation only, for once-off treatment of an iron bacteria affected bore.

BORE SIZE MM	QUANTITY OF TRIPLE 7 ENVIROBORE PER METRE OF WATER IN THE BORE
25	20 ml
50	80 ml
80	200 ml
100	300 ml
125	480 ml
150	700 ml
200	1.2 litres
250	2 litres
300	2.8 litres
400	5 litres
500	7.5 litres

Product Application Sheet – TRIPLE 7 ENVIROBORE

Treatment of bores that constantly cause iron stain

Constant dosing of these bores is the preferred way to keep the problem in check. Treat first as recommended (see chart), then dose the bore at 10 – 20 parts per million (10 – 20 ml per 1000 litres of water). Note, that dosing rates as low as 1ppm have been effective in some instances.

A dosing pump can be set up to automatically do this. Alternatively, pour down 50 -500 ml of product per week, depending on bore size and water quality. Increase intervals or quantity if needed. (Please refer to diagram II and diagram III).

Unblocking of pipes, drippers and sprays

Dosing the water will be necessary in these situations. Once-off treatments will help to clear any slime build-up to some degree but thorough cleaning will need the constant addition of TRIPLE 7 Envirobore.

For first-off restoring of flow, dosing can be set as high as 50 parts per million, then reduced to 10 ppm or less.

Pump maintenance

Place dismantled parts in TRIPLE 7 Envirobore (diluted at 1:10 with water) and circulate or agitate until clean. Leave in solution for a minimum of 6 hours, then rinse and reassemble.

Tank and Trough cleaning

Empty water and sludge from the tank. Dilute TRIPLE 7 Envirobore 1:10 to 1:30 with water and apply to the sides with a broom/brush. Scrub the tank base, rinse away all contaminants and refill with clean water.

Preventing Scale build-up due to hard water

Many businesses who operate with bore or hard water experience mechanical failure due to calcium or scale build-up causing hot water system failure and seizure of pumps, valves etc.

This results in expensive downtime, repair costs and the need for stand-by equipment. Regular maintenance is required on pumps that freeze due to scale formations on rotors, ports, etc. along with motor, shaft and bearing damage due to extra loadings.

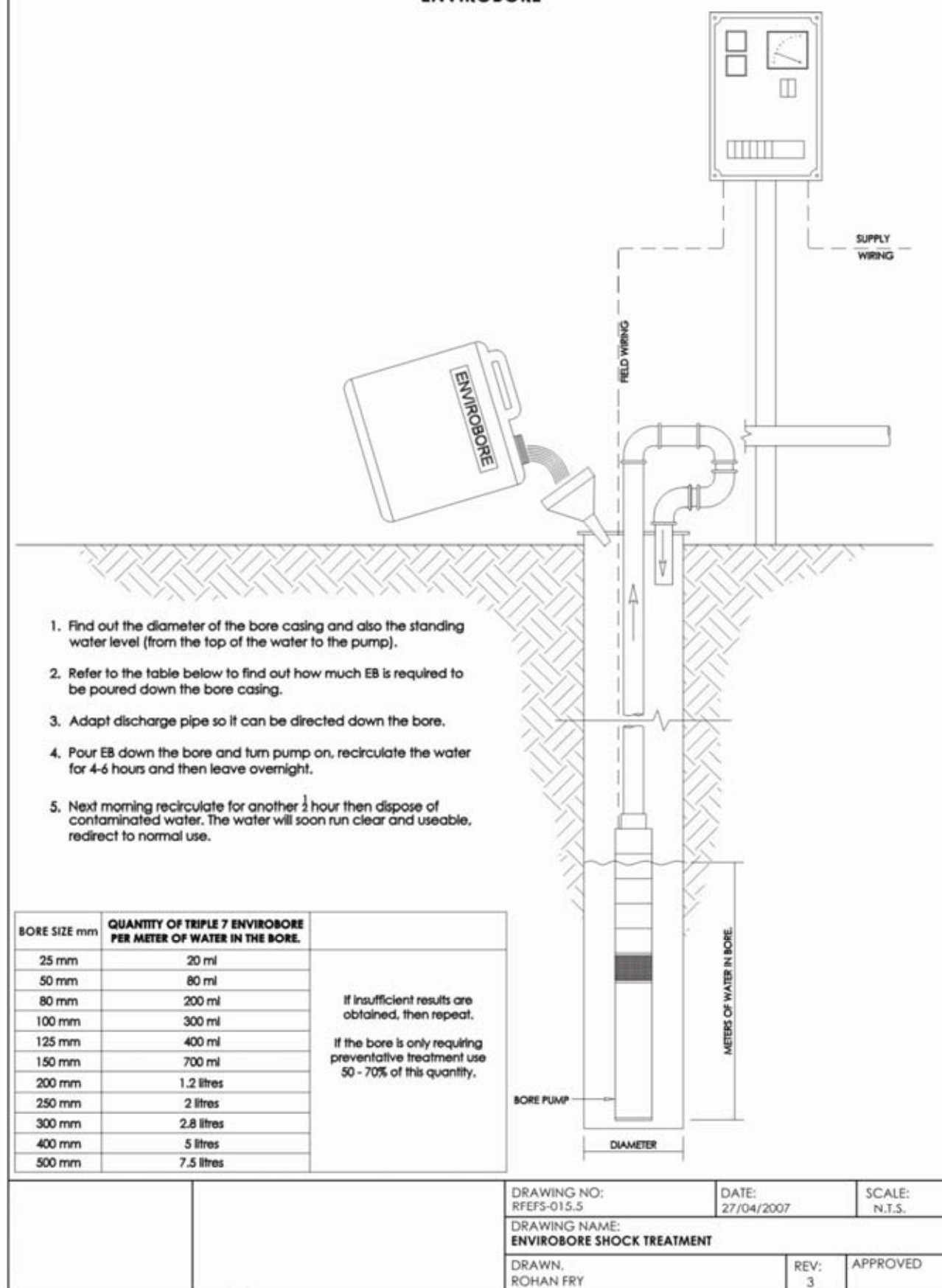
Failures can be overcome by dosing TRIPLE 7 Envirobore into water mains prior to the pumping equipment. Dosing rates of 20ppm are normally sufficient to control scale build-up if the equipment is not already frozen and inoperative.

If scale has built-up in a pump or hot water unit, it is recommended to use TRIPLE 7 Envirobore, a bio-based descaler, an excellent alternative to traditional Hydrochloric Acid based products.

Product Application Sheet – TRIPLE 7 ENVIROBORE

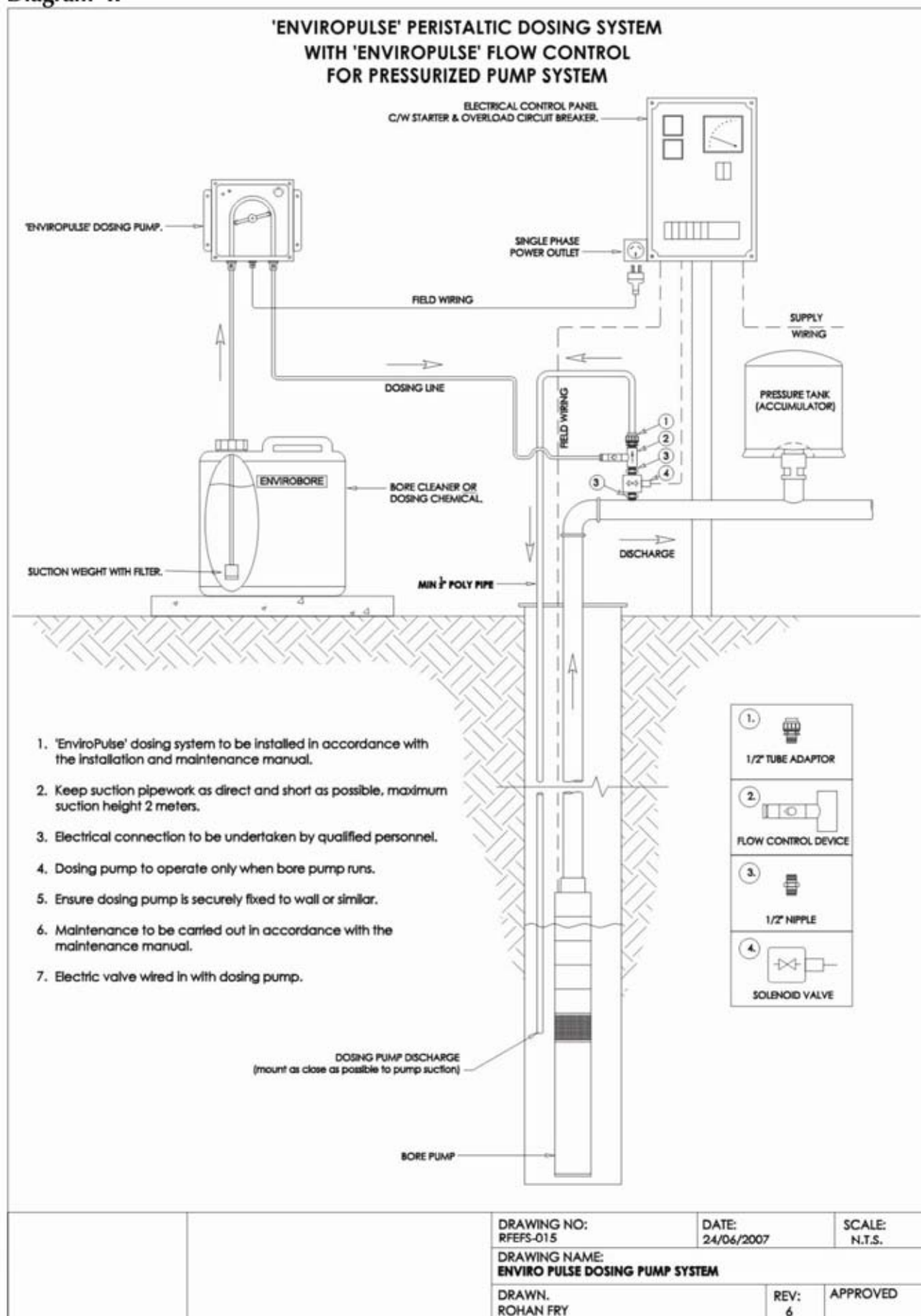
Diagram 1

SHOCK TREATING A BORE WITH 'ENVIROBORE'



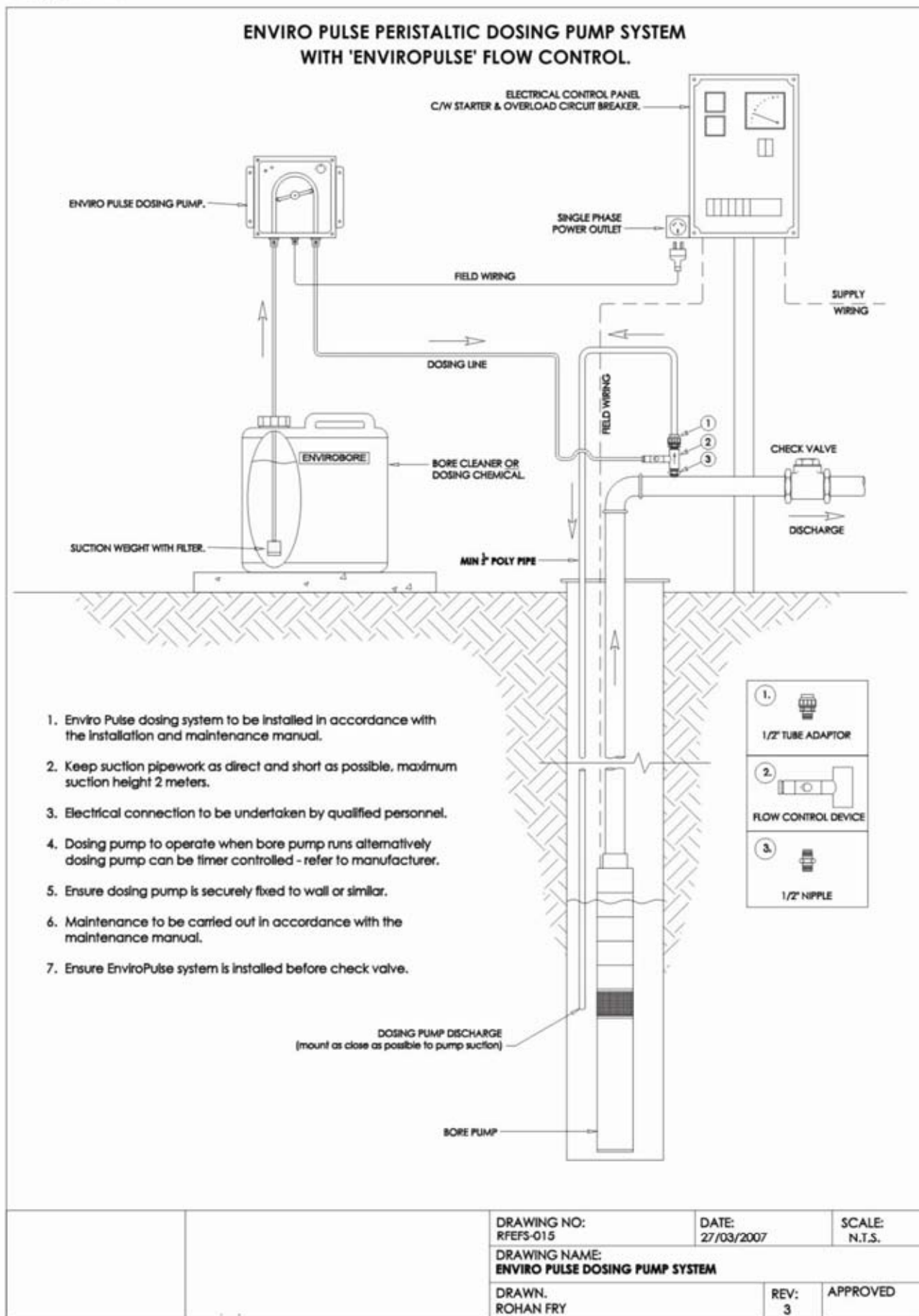
Product Application Sheet – TRIPLE 7 ENVIROBORE

Diagram II



Product Application Sheet – TRIPLE 7 ENVIROBORE

Diagram III



Product Application Sheet – TRIPLE 7 ENVIROBORE

TRIPLE 7 Envirobore Testimonials

Envirobore increases water flow at centre pivot on dairy farm

"The pressure gauge on the 12 span centre pivot showed that the water flow/pressure had dropped significantly. Pressure loss was also visible at the nozzle of the sprinkler head. The 1" discharge pipework which runs from the main overhead span to the flexible sprinkler pipe was removed and found to be $\frac{3}{4}$ blocked with an iron scale.

Infected pipework was replaced with new pipe and the old pipes were to be thrown out. When I became aware of TRIPLE 7 Envirobore, the old infected pipes were soaked in a solution of Envirobore for 12 hours and then flushed out. Results showed a pipe with no scale restriction."

Dairy farm, South Australia

Clearing blocked irrigation drippers

"Grey water from sewerage plant was used to irrigate a citrus orchard, however the under-line drippers became clogged with a 'chewing gum' type matter and had to be cleared every two weeks. A metering pump was then installed and drippers dosed with TRIPLE 7 Envirobore at 500ppm for 24 hours.

Of the non-functional irrigation drippers, 85% were successfully restored to full operation. Approximately 15% remained unfunctional, due to un-treatable particulate (insect parts). The 85% success rate that was achieved, considering the constantly plugged and partially functional irrigation system, was phenomenal.

The irrigation system continues to operate today with an injection rate of less than 10 parts per million. TRIPLE 7 Envirobore gives outstanding performance."

Fruit Grower

Household stains removed

"Thank you for the treatment of our water bore with TRIPLE 7 Envirobore. As a rural housewife, I continually had to rigorously scrub brown water stains off the white ceramic toilet every day. Since our bore was treated with TRIPLE 7 Envirobore the toilet has remained white, needing no more than a basic clean."

Rural housewife, Victoria

Removal of iron bacteria in irrigation

"Due to a problem with iron bacteria in a bore, we decided to shock-dose 5 litres of TRIPLE 7 Envirobore into the entire system and left it overnight. When we started the pump the next morning, a large amount of red mud was discharged.

The output from the pump increased from 200 litres to a full 600 litres per hour.

We were very satisfied and excited with the results."

Caravan park maintenance, Western Australia

Clean-up of filter media

"We had an Amiad Media filter unit that had become built-up with ferric iron bacteria causing a major reduction in through-put and back flushing did not help.

We added TRIPLE 7 Envirobore and air-sparged to enable it, to work through the media. Back flushing after 20 minutes discharged a murky brown soup-like product and the media was very effectively restored."

Major West Australian Irrigation company

Product Application Sheet – TRIPLE 7 ENVIROBORE

TRIPLE 7 Envirobore Testimonials

TRIPLE 7 Envirobore saves our clients thousands of dollars

" I have used and believe that TRIPLE 7 Envirobore is the safest product for removing iron bacteria from pumps in the workshop and in the field.

Our first experience was a badly infected pump, full of dried sludge, which was dismantled in our workshop. One litre of TRIPLE 7 Envirobore was added to 8-10 litres of water and all the parts were tipped in and left to soak over the weekend. The resultant softening and releasing of the sludge was excellent.

A small length of 1¼" poly pipe , coated with iron bacteria scale, with an inside diameter less than 1", was left in the diluted TRIPLE 7 Envirobore for about one hour. The hard contaminant was softened and could then be easily pushed out. Our clients are now able to treat pumps in bores by adding TRIPLE 7 Envirobore and re-circulating, saving thousands of dollars in pump removal costs. For pipework that cannot be set-up with a re-circulation system, a dosing unit does the job at 10 – 20ml per 1,000 litres.

CO-OP Pump Maintenance

Effectively cleans with no risk to staff health and safety

"Recently, I place a badly sludged pump into a 200 litre drum of water containing 4% of TRIPLE 7 Envirobore.

I ran the pump for more than a day to circulate it well. Then I dismantled the pump to check for progress, expecting that I would have to repeat the process. However, the pump was so clean that there was no need. The pump was serviced and re-assembled.

The safety factor of TRIPLE 7 Envirobore also meant that staff were not exposed to the previous health risks associated with acid based alternatives."

Western District Pump repairer

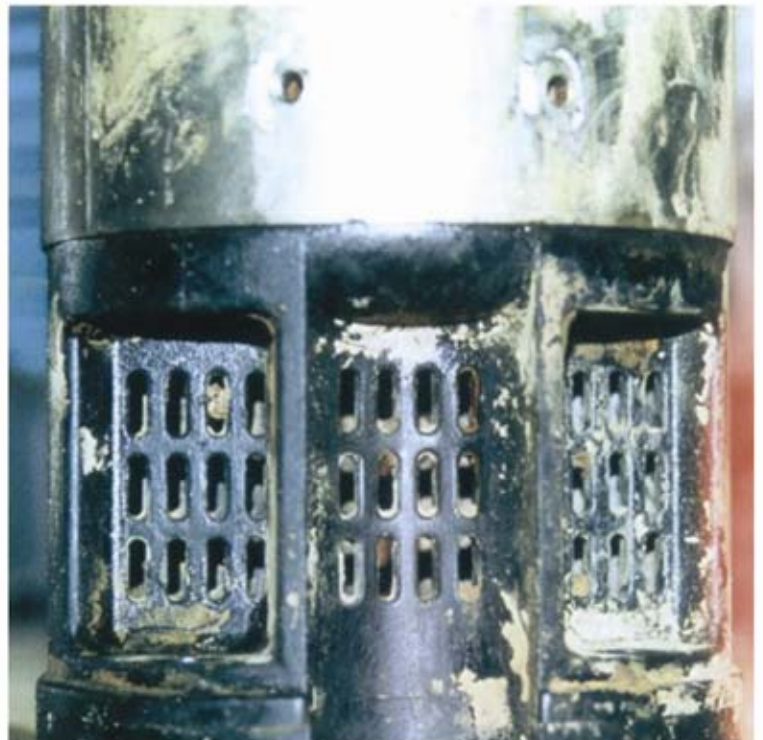
Product Application Sheet – TRIPLE 7 ENVIROBORE

Bore Contaminated with iron bacteria

The pictured pump was completely blocked with iron bacteria and had been removed for dismantling.

The pump was left to recirculate overnight in a 4% TRIPLE 7 Envirobore solution. By morning the pump was restored to full performance. This process could have been completed without removing the pump/motor.

To prevent further problems the suction side was dosed with TRIPLE 7 Envirobore at 5 – 10 parts per million, via a small dosing pump to keep the system free of build-up.



Product Application Sheet – TRIPLE 7 ENVIROBORE

Descaling of Pumping & Water Handling Equipment using TRIPLE 7 EnviroScale

Dismantled pumps and parts:

Place in container and cover with 50:50 TRIPLE 7 EnviroScale and water.

Check pH level occasionally and add more TRIPLE 7 EnviroScale as pH rises above 2.5.

Pour off excess TRIPLE 7 EnviroScale if pH has risen too high and start again.

Once a satisfactory clean has been achieved, rinse parts and re-assemble.

Assembled pumps in the workshop:

Place fully assembled pump in a drum, with sufficient diluted TRIPLE 7 EnviroScale to cover the pump. (A dilution of between 10% and 50% is normal). Run the pump.

Check for over-heating and ensure pH level is maintained below 2.5.

As the pH level rises, add more TRIPLE 7 EnviroScale. Change liquid occasionally if needed.

Descaling a pump in the bore:

Add TRIPLE 7 EnviroScale at the same dilution as TRIPLE 7 Envirobore, pouring it down the water column. Circulate the product, allowing at least six hours for the descalant to work. Pump out the discoloured water and then reconnect the pump.

Preventative Maintenance

TRIPLE 7 EnviroScale is pH dependent and cannot be dosed into the pump in the same way as TRIPLE 7 Envirobore.

A complete descaling program involves using TRIPLE 7 EnviroScale to thoroughly clean-out pipe build up. Once clean, use TRIPLE 7 Envirobore regularly to prevent further problems.

A simple dosing pump that adds 5 - 20 ppm of TRIPLE 7 Envirobore on a regular basis, can give excellent results.

Product Application Sheet – TRIPLE 7 ENVIROBORE

Removal of thick calcium scale from pumps



This extremely scaled-up pump was considered a 'throw-away and replace job'. Once dismantled, the scale looked even worse than expected.

TRIPLE 7 Enviroscale was used to remove the scale in a 10% dilution overnight. After a third change of solution, the cleaned parts were as good as new.

Proudly
Australian



COOLABAH WATER

111 Biroomba Lane - PO Box 1160
Wagga Wagga NSW 2650

PH. 02 6925 8555
FX. 02 6925 8588